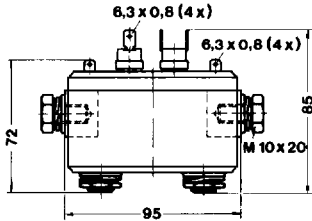


Section 4: Thyristor Pairs for Water Cooling

Cases C 1

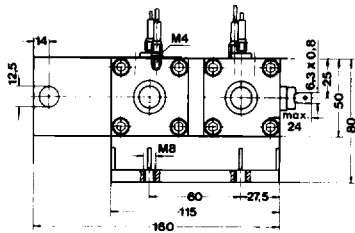


Type	V_{DRM} V_{RRM}	$I_{RMS}^{(1)}$	$I_{RMS}^{(2)}$	I_{TSM} 40 °C 10 ms A	$I_T^2 t$ 40 °C 10 ms A ² s	V_{isol}	Case
▲ New type	V	A	A			V~	
SKIW 250	1200...1600	250	280	1700	14 500	2500	C 1
SKIW 500	1200...1600	500	580	4000	80 000		
SKIW 700	1200...1600	700	850	7000	245 000	2500	C 1
SKIW 900	1200...1600	900	1200	10000	500 000		
▲ SKIW 1001	1200...1600	1100	1600	9000	245 000	2500	C 7
▲ SKIW 1202	1200...1600	1250	1750	15000	1 125 000		C 8
SKW 1200	1200...1600	1200	1900	10000	500 000	-	C 5
SKW 1700	1200...1600	1700	2400	15000	1 125 000	-	C 6

¹⁾ ED = 100 %

²⁾ ED = 50 %; n = 10

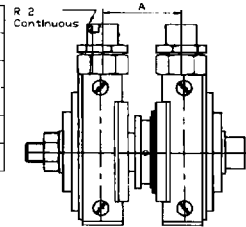
Cases C 5 / C 6



SKIW 1001 SKIW 12001

Case 9 Case 10

Case	C 9	C 10
A	40	52
B	71	83
C	65	77
D	110	125
E	42	48



WIRES:

G1/K1, G2/K2 L_{min} = 150 mm

Thermostat CEI 2022 NC T=67 °C

Black wires 1 mm² L_{min} = 300 mm

V_{isol} = 2500 V_{RMS}

